

QH-21C load cells are available in the capacities from 0.5t to 5t.

Alloy steel & stainless steel construction with single shear beam type.

Sealed welding , waterproof, anti-corrosion and suitable for all kinds of environment.

Integral structure and easy installation.

Suitable for electronic platform scales, truck scale, floor scale , hopper scale and other electronic weighing devices.



Features:

Capacity : 0.5t to 5t

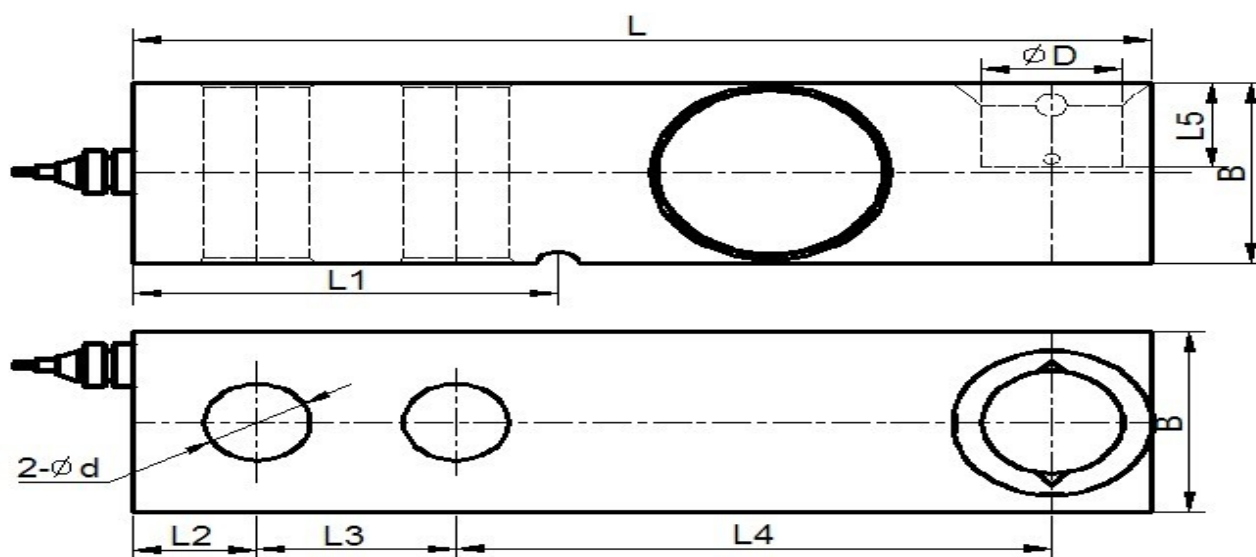
Defend grade: IP67 & IP68

High accuracy.

Alloy steel & stainless steel single shear beam

Low profile and nice exterior

Electrical connection and Dimensions:



Cap (kg)	500	1000	1500	2000	2500	3000	5000
L(mm)	130				171.5		
L1(mm)	54.2					77.2	
L2(mm)	15.8					19	
L3(mm)	25.4					38.1	
L4(mm)	76.2					95.3	
L5(mm)	15					19.5	
D(mm)	18					25	
B(mm)	31.8					38.1	
d(mm)	13.5					20	

Technical Specifications

Specifications:		
capacity	t	0.5, 1, 1.5, 2, 3, 5
safe overload	%FS	150
ultimate overload	%FS	250
rated output	mV/V	2.0 ± 0.003
excitation voltage	Vdc	9 ~ 12
combined error	%FS	± 0.03
zero unbalance	%FS	± 1
non-linearity	%FS	± 0.03
hysteresis	%FS	± 0.03
repeatability	%FS	± 0.02
creep	%FS/30min	± 0.03
input resistance	Ω	350 ± 5
output resistance	Ω	350 ± 3
insulation resistance	M Ω	$\geq 5000 @ 50 \text{ Vdc}$
operating temperature range	$^{\circ}\text{C}$	-20 ~ +55
compensated temperature range	$^{\circ}\text{C}$	-10 ~ +40
temperature coefficient of SPAN	%FS/ 10°C	± 0.02
temperature coefficient of ZERO	%FS/ 10°C	± 0.03

Electrical connection:

Excitation+ red Excitation- black Signal+ green Signal- white

Four-core shielded cable with polyethylene.

Cable diameter : $\varnothing 5\text{mm}$

Cable length: 3 m

The cable length could be chose by customer's application.